

# 2017 Annual Meeting



**A M S P D C**

Association of Medical School  
Pediatric Department Chairs (AMSPDC)

March 2 – 5, 2017

Tempe Mission Palms  
Tempe, AZ

[www.AMSPDC.org](http://www.AMSPDC.org)



## Association of Medical School Pediatric Department Chairs (AMSPDC) Leadership March 2016 – March 2017

### *President*

**Valerie P. Opipari, MD** (2015 - 2017)  
Ravitz Found. Prof. of Peds. & Communicable Diseases, Dept. of Peds.  
University of Michigan Medical School  
1500 E. Medical Center Drive, D3202 MPB, Box 5718  
Ann Arbor, MI 48109-5718  
Email: vcastle@med.umich.edu

### *Incoming President-Elect*

**Michael Artman, MD** (2016 - 2017)  
Professor and Chair, Department of Pediatrics  
Kansas University Medical Ctr. & Children's Mercy Kansas City  
2401 Gillham Road  
Kansas City, MO 64108  
Email: martman@cmh.edu

### *Outgoing President-Elect*

**Richard F. Jacobs, MD** (2015 - 2017)  
Robert Fiser, Jr., MD Endowed Chair in Pediatrics  
University of Arkansas for Medical Sciences  
1 Children's Way Slot 900  
Little Rock, AR 72202-3591  
Email: rfj@uams.edu

### *Immediate Past President*

**Stephen R. Daniels, MD, PhD** (2015 - 2017)  
Professor and Chair, Department of Pediatrics  
University of Colorado School of Medicine  
Pediatrician-in-Chief and Chair, Childrens Hospital Colorado  
13123 East 16th Avenue, B065  
Denver, CO 80045  
Email: Stephen.Daniels@childrenscolorado.org

### *Secretary-Treasurer*

**Robert W. Wilmott, MD, MB** (2012 - 2018)  
IMMUNO Professor and Chair, Department of Pediatrics  
St. Louis University School of Medicine  
1465 South Grand Boulevard  
St. Louis, MO 63104  
Email: wilmotr@slu.edu

### *Executive Director*

**Laura Degnon, CAE**  
6728 Old McLean Village Drive  
McLean, VA 22101  
Email: laura@ampdc.org

### *Board Members*

**D. Wade Clapp, MD** (2015 - 2018)  
Richard L. Schreiner Professor and Chair, Department of Pediatrics  
Indiana University School of Medicine  
705 Riley Hospital Dr., Rm. 5900  
Indianapolis, IN 46202-5225  
Email: dclapp@iu.edu

**Loretta Cordova De Ortega, MD** (2016 - 2019)  
Professor and Chair, Department of Pediatrics  
University of New Mexico School of Medicine  
MSC10 5590 / 1 University of New Mexico  
Albuquerque, NM 87131-0001  
Email: lcordovadeortega@salud.unm.edu

**Sherin Devaskar, MD** (2015 - 2018)  
Mattel Executive Endowed Chair, Department of Pediatrics  
Department of Pediatrics, David Geffen School of Medicine at UCLA  
10833 LeConte Ave., 22-412 MDCC  
Los Angeles, CA 90095-1752  
Email: sdevaskar@mednet.ucla.edu

**Samir S. El-Dahr, MD** (2016 - 2018)  
Jane B. Aron Professor and Chair, Department of Pediatrics  
Tulane University School of Medicine  
1430 Tulane Avenue, Box SL37  
New Orleans, LA 70112  
Email: seldahr@tulane.edu

**Gary R. Fleisher, MD** (2016 - 2019)  
Egan Family Foundation Prof. and Chair, Department of Pediatrics  
Harvard Medical School Children's Hospital  
300 Longwood Avenue  
Boston, MA 02115  
Email: gary.fleisher@childrens.harvard.edu

**D. Brent Polk, MD** (2014 - 2017)  
Physician-in-Chief and Chair, Department of Pediatrics  
Keck School of Medicine of USC  
4650 Sunset Blvd., MS #126  
Los Angeles, CA 90027  
Email: dbpolk@chla.usc.edu

**Teresa Quattrin, MD** (2014 - 2017)  
Professor and Chair, Department of Pediatrics  
State University of New York/ Buffalo  
239 Bryant Street  
Buffalo, NY 14222  
Email: tquattrin@upa.chob.edu

**Ann Reed, MD** (2016 - 2019)  
Chair and Physician in Chief, Department of Pediatrics  
Duke University School of Medicine  
Medical Center Box 3352  
Durham NC 27710  
Email: ann.reed@duke.edu

### *Ex Officio Canadian Representative*

**Allison Eddy, MD** (2015 - 2018)  
Professor and Head, Department of Pediatrics  
BC Children's Hospital  
2015-4480 Oak Street  
Vancouver, BC V6H3V4  
Email: allison.eddy@cw.bc.ca

## AMSPDC Overview

**MISSION:** To improve the health and wellbeing of children through the development of the chairs of academic pediatric departments and support of their clinical, research, education, and advocacy missions.

**VISION:** Academic Pediatric Departments lead in care delivery, research, training, and advocacy that improves the health and wellbeing of children in their communities and throughout the world.

**VALUES STATEMENT:** The Association of Medical School Pediatric Department Chairs upholds the following core values:

- Integrity:** We are professional and honest in our working relationships and strive for equity and fairness in our decision making. We honor our commitments and hold ourselves accountable to the highest ethical and performance standards.
- Collaboration:** We are committed to working together with each other, patient groups, and relevant professional organizations. We support a culture of participation and inclusion, including the formation of partnerships, and advocacy designed to influence public-policy and resource allocation decisions that impact children's health. We respect differences among our members and their organizations, recognizing they are part of our strength, and freely share ideas to inspire and learn from one another.
- Compassion:** We care about children and families and each other.
- Innovation:** We support an organizational culture that values change and innovation.
- Leadership:** As the leaders in academic pediatrics we model the values of our organization and help to develop the leaders of tomorrow.
- Excellence:** We pursue excellence in all our core missions: clinical care, research, education and advocacy.

**GOALS:** Along with its mission, vision, and values, AMSPDC has defined the following as its core goals:

- High Quality Accessible Care – Improve clinical access, health outcomes and value by assisting department chairs in the clinical delivery enterprise.
- High Quality Research – Improve the quality, impact and influence of children's health research being done within pediatric departments.
- Transform Education – Identify issues in medical education across the continuum and share strategies to help chairs strengthen the educational missions of our departments.
- Advocate for Children – Support membership priorities locally and federally to ensure funding and policy decisions address gaps in care access, disease prevention, health outcomes and child health research.
- Leadership and Career Development – Enhance the leadership skills of current members and aspiring leaders within pediatrics. Promote career development for pediatric chairs. Provide opportunities for members to share best practices and network.
- Excellent Administration – Strengthen the administration of academic pediatrics.

## Meeting Overview

### Thursday, March 2<sup>nd</sup>

The 2017 program will open with the prestigious **Pediatric Leadership Development Program's (PLDP)** conference. The fellowship program aims to help develop the next generation of pediatric chairs in North America, ensuring that they will be well poised to lead our profession through the rapidly changing environment of academic medicine and health care in general.

This program is open to invited fifth and sixth Cohort PLDP scholars, mentors, and committee/board members and does not include membership at large.

We will also be holding a workshop for **New Chairs** during the 2017 meeting on Thursday; special registration is required.

As in past years, this year's meeting includes a session for the **Pediatric Scientist Development Program (PSDP)** and the **Canadian Child Health Clinician Scientist Program (CCHCSP)** trainees who will attend career development workshops. The PSDP operates under the aegis of AMSPDC. PSDP and CCHCSP enable pediatric fellows to undergo intensive research training with highly successful mentors in renowned research programs.

A combined reception and dinner for the PLDP participants, PSDP fellows and members of the Steering and Evaluation Committee, as well as New Chair workshop attendees and speakers, will conclude the day's events.

### Friday, March 3<sup>rd</sup>

AMSPDC members interested in hearing new and exciting research, and chairs and residents invited to participate in the **Frontiers in Science (FIS)** program will want to arrive in time for presentations by third-year PSDP fellows. Residents contemplating careers in research find these presentations particularly exciting because they see first-hand how PSDP training develops young pediatric physician-scientists.

The **Women's Chair Luncheon** will take place at 1:00pm at an offsite restaurant. If you did not previously register to attend, but would like to, please see the registration desk. FIS continues with an afternoon session devoted to research presented by faculty from different institutions, including AMSPDC member James Nataro, MD, PhD, MBA from the University of Virginia. These presentations update chairs on new work that will affect us as academicians and gives PSDP fellows a chance to see other research horizons. Those invited to speak are chosen not only for their science but also for their ability to tell the story.

The FIS/PSDP program closes with posters presented by second-year PSDP fellows and CCHCSP fellows; scientific interchange with AMSPDC members and residents is a high point.

The evening concludes with a dinner that brings together PSDP fellows, FIS Residents, and their sponsoring AMSPDC chairs.

### **Saturday, March 4<sup>th</sup>**

With the exception of the AMSPDC Women's Chair Luncheon held Friday, this will be the first day of the AMSPDC meeting and plenary session. Saturday morning includes an open networking breakfast designed to give chairs the chance to discuss issues of mutual interest in an informal setting.

Session one will include talks and discussions on Precision Health moderated by Dr. Ann Reed. Dr. Pieter Dorrestein will give a lecture on "Digitizing the Chemistry of Microbes", followed by Dr. Kenneth Mandl giving his presentation on "Real World Data and Patient Driven Precision", and concluding with Provost Marie Lynn Miranda and her presentation "Multiple Components of Precision Medicine for Children".

The second morning session will feature a keynote address by newly appointed Dr. Diana Bianchi of the National Institutes of Health/NICHHD entitled "A Vision for the Future of NICHHD". This session will be moderated by Dr. Sherin Devaskar.

Our third and final session before our lunch break will be four different speakers broken out into three groups. Each AMSPDC member will be assigned a room, found on the back of your badge. The speakers will rotate rooms, with about 15-20 minutes per each session to allow for robust discussions. Panelists include: Dr. Karen Remley and Mr. Mark Del Monte of the American Academy of Pediatrics (moderated by Dr. Scott Rivkees), Mr. Mark Wietecha of Children's Hospital Association (moderated by Dr. Richard Jacobs), and Dr. David Nichols of the American Board of Pediatrics (moderated by Dr. David Gremse). The participants will then break for lunch where they will have a little under 2 hours. We encourage the continuity of networking over lunch with fellow colleagues. Participants are responsible for getting their own lunch.

After the lunch break, all will convene in Palm CF for the start of the afternoon sessions. It will begin with a quick final discussion from the previous morning session. After a 15 minute summary, our first afternoon session will begin. Mr. Amir Rubin will give a lecture on "Transforming Healthcare". This keynote will be moderated by Dr. Teresa Quattrin.

In the second afternoon session, we will cover Burnout and Wellness hearing from Dr. Janet Serwint on "Creating and Maintaining a Work Environment that Fosters Physician (and Chair) Wellness". Tables will be labeled with various topics and participants are asked to sit at a table with a topic they are interested in. Tables will breakout and have meaningful discussion. The session will culminate with each table summarizing their discussion with the whole group. Dr. Jerold Stirling will moderate.

The day's program will conclude with the AMSPDC Business Meeting (AMSPDC members only) led by Dr. Valerie Opiari. The evening will include a reception and dinner for members of AMSPDC and their guests.

### **Sunday, March 5<sup>th</sup>**

Sunday morning will begin with breakfast for chairs of small departments, facilitated by Dr. Timothy Fete, and large departments, facilitated by Dr. Gabriel Haddad. Dr. Lewis First will then moderate the AMSPDC Education Committee plenary session. The final plenary session will be given by the AMSPDC Research Committee, moderated by Dr. Joseph St. Geme. Dr. Valerie Opiari will then conclude the meeting with the President's Closing Remarks.

**This meeting would not be possible without the dedication of the following leaders;  
we sincerely thank them for their service:**

AMSPDC Planning Committee Chair: Dr. Sherin Devaskar

Frontiers in Science: Dr. Alan Schwartz

Pediatric Scientist Development Program: Dr. Margaret Hostetter

Pediatric Leadership Development Program: Dr. Robert W. Wilmott

AMSPDC New Chairs Committee Chair: Dr. Frederick Barr

**Thursday, March 2**

<b>7:00am - 9:00pm</b>	<b>PSDP Meeting</b>	
7:00 - 9:00am	<b>Breakfast Buffet Open</b> .....	<i>Cloister</i>
	PSDP, CCHCSP	
7:00 - 7:30am	<b>Program Evaluation Committee Breakfast</b> .....	<i>Dolores</i>
	Program Evaluation Committee	
7:45 - 10:15am	<b>Program Evaluation Committee Interviews</b>	
	1st, 2nd, 3rd year fellows and Program Evaluation Committee	
8:30 - 9:20am	<b>PSDP Orientation</b> .....	<i>Cavetto</i>
	<i>Margaret Hostetter, MD, PSDP Program Director, Cincinnati Children's Hospital Medical Center</i>	
	PSDP incoming fellows	
9:30 - 10:20am	<b>Career in Pediatrics</b> .....	<i>Cavetto</i>
	<i>Margaret Hostetter, MD, PSDP Program Director, Cincinnati Children's Hospital Medical Center</i>	
	PSDP incoming fellows	
10:30am - 12:00pm	<b>Program Evaluation Committee Debrief</b> .....	<i>Dolores</i>
	<i>Program Evaluation Committee</i>	
	Program Evaluation Committee	
10:30 - 11:30am	<b>PSDP Graduate Speaker</b> .....	<i>Cavetto</i>
	<i>Lisa Robinson, MD, FRCP(C), University of Toronto / SickKids</i>	
	PSDP and CCHCSP fellows	
11:30 am - 1:30pm	<b>Lunch</b> .....	<i>Cloister</i>
	PSDP, CCHCSP	
1:30 - 3:00pm	<b>Grant Writing Workshop</b> .....	<i>Cavetto</i>
	2nd and 3rd year fellows	
3:30 - 5:30pm	<b>Joint Committee Meeting</b> .....	<i>Dolores</i>
	Program Evaluation and Steering Committees	
6:00 - 7:00pm	<b>Reception</b> .....	<i>Courtyard East</i>
	PSDP, CCHCSP, PLDP, New Chairs	
7:00 - 9:00pm	<b>Dinner</b> .....	<i>Courtyard East</i>
	PSDP, CCHCSP, PLDP, New Chairs	
<b>8:00am - 9:00pm</b>	<b>PLDP Meeting</b> .....	<i>Palm F</i>
8:00 - 9:00am	<b>360 Evaluation Feedback</b>	
	<i>Kenneth M. Slaw, PhD, Leadership Consultant</i>	
9:00 - 9:15am	<b>AMSPDC Presidential Welcome</b>	
	<i>Valerie Opiari, MD, University of Michigan Medical School</i>	
9:15 - 10:00am	<b>Welcome and Overview of PLDP</b>	
	<i>Robert Wilmott, MD, MB, BS, Saint Louis University School of Medicine</i>	
	<i>Catherine Scott Manno, MD, New York University School of Medicine</i>	
	<i>Nina Schor, MD, PhD, University of Rochester School of Medicine and Dentistry</i>	

**Thursday, March 3, continued**

**10:00 - 10:45am Inspiring a Shared Vision**  
*Stephen Daniels, MD, University of Colorado School of Medicine*

**10:45 - 11:00am Break**

**11:00am - 12:15pm Final Project Presentations**  
*2016-2017 Cohort*

**12:15 - 1:15pm Lunch Panel: The Joys and Challenges of Being a Pediatric Chair**  
*Catherine Scott Manno, MD, New York University School of Medicine*  
*Loretta Cordova de Ortega, MD, University of New Mexico School of Medicine*  
*Nina Schor, MD, PhD, University of Rochester School of Medicine and Dentistry*  
*Robert Wilmott, MD, MB, BS, Saint Louis University School of Medicine*  
*Valerie Opipari, MD, University of Michigan Medical School*  
*Wade Clapp, MD, Indiana University School of Medicine*

**1:15 - 2:00pm Challenging the Process**  
*Nina Schor, MD, PhD, University of Rochester School of Medicine and Dentistry*

**2:15 - 3:30pm Project Presentations**  
*2017-2018 Cohort*

**3:30 - 3:45pm Break**

**3:45 - 4:30pm Encouraging the Heart**  
*Lewis First, MD, University of Vermont Larner College of Medicine*

**6:15 - 9:00pm Reception and Dinner**  
*PLDP, New Chairs, PSDP & CCHCSP*

**8:00am - 9:00pm New Chairs Workshop ..... Palm C**

**8:00 - 8:15am Presidential Welcome**  
*Valerie Opipari, MD, University of Michigan Medical School*

**8:15 - 8:45am What Makes a Chair a Good Leader?**  
*Richard Jacobs, MD, University of Arkansas for Medical Sciences*

**8:45 - 9:30am Educational Myths and Realities That Pediatric Chairs Should Know About**  
*Lewis First, MD, University of Vermont Larner College of Medicine*

**9:30 - 10:00am Building Leadership Teams**  
*Bruder Stapleton, MD, University of Washington School of Medicine*

**10:00 - 10:30am Break**

**10:30 - 11:00am Finances and Budgets**  
*Valerie Opipari, MD, University of Michigan Medical School*

**11:00 - 11:30am Recruiting and Retaining the Best Faculty for Your Program**  
*Stephen Daniels, MD, University of Colorado School of Medicine*

**11:30am - 12:00pm Recognition and Management of at Risk Faculty**  
*Judy Aschner, MD, Albert Einstein College of Medicine*

**12:00 - 1:00pm Lunch**

**1:00 - 1:30pm Department and Hospital Partnerships**  
*Brent Polk, MD, Keck School of Medicine of USC*

**1:30 - 2:00pm Strategic Planning and Missions**  
*Frederick Barr, MD, University of Mississippi School of Medicine*

**2:00 - 2:30pm Building and Maintaining Your Research Mission**  
*Ann Reed, MD, Duke University School of Medicine*

**2:30 - 3:00pm Break**

**3:00 - 3:30pm Philanthropic Investment**  
*Michael Artman, MD, Childrens Mercy Kansas City & Kansas University Medical Center*

**3:30 - 3:45pm Closing Remarks**  
*Frederick Barr, MD, University of Mississippi School of Medicine*

**6:15 - 9:00pm Reception and Dinner**  
*PLDP, New Chairs, PSDP & CCHCSP*

## Friday, March 3

<b>7:00am - 9:30pm</b>	<b>PSDP Meeting &amp; Frontiers in Science Symposium 2017</b>	
7:00 - 8:30am	<b>Breakfast Buffet Open</b> .....	<i>Palm Courtyard</i>
	FIS, PSDP, CCHCSP	
8:30 - 11:00am	<b>PSDP Research Presentations</b> .....	<i>Palm A, B, D &amp; E</i>
	FIS, PSDP, CCHCSP	
11:00am - 12:00pm	<b>PSDP Steering Committee Meeting</b> .....	<i>Cavetto</i>
	1st, 2nd, 3rd year fellows and Program Evaluation Committee	
12:00 - 1:30pm	<b>FIS Resident / PSDP Committee Member Boxed Lunches</b> .....	<i>Courtyard East</i>
	FIS Residents, PSDP Committee Members	
12:00 - 1:30pm	<b>Meet the Professor Lunch</b> .....	<i>Joshua Tree</i>
	PSDP, CCHCSP	
1:30 - 2:30pm	<b>2nd Year PSDP Fellows Meet With Dr. Hostetter</b> .....	<i>Cavetto</i>
	2nd Year Fellows, Dr. Margaret Hostetter	

1:00 - 2:30pm **Women's Chair Lunch** ..... Offsite

2:30 - 9:30pm **Frontiers in Science Symposium** ..... Palm Ballroom

2:30 - 2:35pm	<b>Introduction</b>	
	<i>Valerie Opirari, MD, AMSPDC President</i>	
2:35 - 2:40pm	<b>Opening Remarks</b>	
	<i>Alan Schwartz, PhD, MD, FIS Program Chair</i>	
2:40 - 3:20pm	<b>PSDP Alumnus: Acute Kidney Injury: New Approaches to Combat a Growing Problem</b>	
	<i>Lisa Robinson, MD, FRCP(C), University of Toronto / SickKids</i>	
3:20 - 4:00pm	<b>Bacterial Regulatory Networks: Can Bacteria Have Mercy?</b>	
	<i>James Nataro, MD, PhD, MBA, University of Virginia</i>	
4:00 - 4:15pm	<b>Break</b>	
4:15 - 4:55pm	<b>Toward a Genetic Theory of Childhood Infectious Diseases</b>	
	<i>Jean-Laurent Casanova, MD, PhD, Howard Hughes Medical Institute / Rockefeller University</i>	
4:55 - 5:35pm	<b>12th Annual Warshaw Lecture: "Stem Cells in Perinatal Biology: Science &amp; Translation"</b>	
	<i>Stella Kourembanas, MD, Boston's Children's Hospital / Harvard Medical School</i>	
5:35 - 5:40pm	<b>Closing Remarks</b>	
	<i>Alan Schwartz, PhD, MD, FIS Program Chair</i>	

7:30 - 9:30pm **Dinner** ..... Abbey  
PSDP, CCHCSP, FIS

## Saturday, March 4

7:00 - 8:00am **Breakfast and Open Networking** ..... Abbey

8:00 - 8:15am **Welcome** ..... Palm CF

*Valerie Opirari, MD, AMSPDC President*  
*Sherin Devaskar, MD, AMSPDC Program Committee Chair*

8:15 - 10:00am **Precision Health** ..... Palm CF

*Moderator: Ann M. Reed, MD, Duke University School of Medicine*  
**Digitizing the Chemistry of Microbes**  
*Pieter Dorrestein, MD, MPH, Harvard Medical School*



**Saturday, March 4, continued**

**Real World Data and Patient-Driven Precision**

*Kenneth Mandl, MD, MPH*

**Multiple Components of Precision Medicine for Children**

*Marie Lynn Miranda, PhD, Rice University*

<b>10:00 - 10:15am</b>	<b>Break</b> ..... <i>Foyer</i>
<b>10:15 -11:15am</b>	<b>Keynote Address</b> ..... <i>Palm CF</i> <b>A Vision for the Future of NICHD</b> <i>Speaker: Diana Bianchi, MD, PhD, National Institutes of Health</i> <i>Moderator: Sherin U. Devaskar, MD, David Geffen School of Medicine at UCLA</i>
<b>11:15 - 11:25am</b>	<b>Updates from AAP, ABP, CHA</b> ..... <i>Palm CF</i>
<b>11:25 -11:30am</b>	<b>Break to Move to Assigned Room</b>
<b>11:30am -12:30pm</b>	<b>Small Group Sessions</b> ..... <i>Speakers will rotate</i> <b>A Discussion with the American Academy of Pediatrics</b> ..... <i>Palm D (Group 1)</i> <i>Speaker: Karen Remley, MD, MBA, MPH, American Academy of Pediatrics</i> <i>Speaker: Mark Del Monte, JD, American Academy of Pediatrics</i> <i>Moderator: Scott Rivkees, MD, University of Florida College of Medicine</i> <b>A Discussion with the American Board of Pediatrics</b> ..... <i>Palm E (Group 2)</i> <i>Speaker: David Nichols, MD, MBA, American Board of Pediatrics</i> <i>Moderator: David Gremse, MD, University of South Alabama College of Medicine</i> <b>A Discussion with the Children’s Hospital Association</b> ..... <i>Xavier (Group 3)</i> <i>Speaker: Mark Wietecha, Children’s Hospital Association</i> <i>Moderator: Richard Jacobs, MD, University of Arkansas for Medical Sciences</i>
<b>12:30 - 2:15pm</b>	<b>Lunch Break</b>
<b>2:15 - 2:30pm</b>	<b>Highlights and Take-Home Points from Small Group Sessions</b> ..... <i>Palm CF</i>
<b>2:30 - 3:15pm</b>	<b>Transforming Healthcare</b> ..... <i>Palm CF</i> <i>Speaker: Amir Rubin, MBA, MHSA, Optum &amp; UnitedHealth Group</i> <i>Moderator: Teresa Quattrin, MD, University of Buffalo SUNY School of Medicine</i>
<b>3:15 - 4:30pm</b>	<b>Burnout and Wellness</b> ..... <i>Palm CF</i> <b>Creating and Maintaining a Work Environment that Fosters Physician (and Chair) Wellness</b> <i>Speaker: Janet Serwint, MD, Johns Hopkins University School of Medicine &amp; Johns Hopkins Bloomberg School of Public Health</i> <i>Moderator: Jerold Stirling, MD, Loyola University, Chicago Stritch School of Medicine</i>
<b>4:30 - 4:45pm</b>	<b>Break</b> ..... <i>Foyer</i>
<b>4:45 - 5:30pm</b>	<b>AMSPDC Members Business Meeting</b> ..... <i>Abbey</i> <i>Valerie Opipari, MD, AMSPDC President, University of Michigan Medical Center</i>
<b>6:30 - 9:30pm</b>	<b>AMSPDC Reception &amp; Dinner</b> ..... <i>Poolside Terrace</i>

Sunday, March 5

6:30 - 8:00am	<b>Department Breakfast</b> (Breakfast opens at 6:30am. Sessions begin promptly at 7:00am) Small Departments ..... <b>Palm E</b> <i>Moderator: Timothy Fete, MD, MPH, University of Missouri, Columbia School of Medicine</i> Large Departments ..... <b>Palm D</b> <i>Moderator: Gabriel Haddad, MD, University of California San Diego School of Medicine</i>
8:00 - 8:15am	<b>Break</b> ..... <b>Foyer</b>
8:15 - 9:15am	<b>Updates from the Education Committee</b> ..... <b>Palm CF</b> <i>Moderator: Lewis First, MD, University of Vermont Larner College of Medicine</i> <b>“Match Frenzy”</b> <i>Robert J. Vinci, MD, Boston University School of Medicine</i> <b>Fourth Year Letters</b> <i>Alice Ackerman, MD, MBA</i>
9:15 - 10:15am	<b>Update from the Research Committee</b> ..... <b>Palm CF</b> <i>Moderator: Joseph St. Geme III, MD, University of Pennsylvania School of Medicine</i> <b>Optimizing a Department of Pediatrics Research Program</b> <i>Panelists: Wade Clapp, MD, Indiana University School of Medicine; Phyllis Dennery, MD, Brown University; Margaret Hostetter, MD, University of Cincinnati College of Medicine; Susan Kline, MS, Duke University; Liz McCarty, MS, CRA, Emory University; John Sparks, MD, University of Nebraska College of Medicine</i>
10:15 - 10:30am	<b>President’s Closing Address</b> ..... <b>Palm CF</b> <i>Valerie P. Opari, MD, AMSPDC President, University of Michigan Medical School</i>

**AMSPDC would like to thank the members of the Planning Committee  
for their contributions to this meeting:**

**AMSPDC Annual Meeting Planning Committee**

Chair: Sherin U. Devaskar, MD, David Geffen School of Medicine at UCLA

Ann M. Reed, MD, Duke University School of Medicine

David Gremse, MD, University of South Alabama College of Medicine

Lewis First, MD, University of Vermont Larner College of Medicine

Richard Jacobs, MD, University of Arkansas for Medical Sciences College of Medicine

Teresa Quattrin, MD, University of Buffalo, Jacobs School of Medicine



*This program is made possible in part by an unrestricted sponsorship provided by Abbott Nutrition. Abbott Nutrition’s support did not include input or influence over the content of the program.*

## 2017 Frontiers in Science Residents

Resident	Year	Chair	Institution
Neha Ahluwalia, MBBS, MD	PL-2	Clifford Bogue, MD	Yale New Haven Hospital
Jonathan Beus, MD, MSCR	PL-2	Joseph St. Geme, MD	The Children's Hospital of Philadelphia
Shannon Bowen, MD	PL-1	Keith English, MD	Michigan State University College of Medicine
Carla Cartagena De Jesus, MD	PL-1	Fayez K. Ghishan, MD	University of Arizona
Thomas Anthony Cristoforo, DO	PL-2	Patricia Emmanuel, MD	University of South Florida College of Medicine
Jessica Daley, MD	PL-2	Phyllis Dennery, MD	Brown University/Hasbro Children's Hospital
Caroline Dias, MD, PhD	PL-2	Gary Fleisher, MD	Boston Children's Hospital/BMC
Ellen Knoll Diego, MD	PL-2	Lewis First, MD	University of Vermont Children's Hospital
Gilad Evrony, MD, PhD	PL-2	Lisa Satlin, MD	Mount Sinai Hospital
Sasidhar Goteti, MD	PL-1	Thomas Welch, MD	SUNY Upstate Medical Center
Sigfus Gunnlaugsson, MD	PL-2	Juan Salazar, MD, MPH, FAAP	CCMC - UCONN Pediatrics
Malena Gutierrez, MD	PL-1	Mitchel Cohen, MD	University of Alabama School of Medicine
Jennifer Han, MD	PL-2	Loretta Cordova de Ortega, MD	University of New Mexico
Rachel Herdes, DO	PL-2	Raymon Watts, MD	Louisiana State University Health Sciences Center
Deepa Joshi, MD	PL-2	Thomas Shanley, MD	Chicago/McGaw Medical Center of Northwestern University
Benjamin JS al-Haddad, MD, MSc, PhD	PL-2	Bruder Stapleton, MD	Seattle Children's Hospital/University of Washington
Gabrielle Karpinsky, MD	PL-2	Tej Mattoo, MD, DCH, FRCP	Detroit Medical Center
Allek Kelm, MD	PL-2	Michael Artman, MD	University of Kansas
Jacquelyn Lajiness, MD, PhD	PL-1	D. Wade Clapp, MD	Indiana University School of Medicine
Tina Qiu Lu, BS, MD	PL-2	Gabriel Haddad, MD	University of California San Diego
Katie MacKrell, MD	PL-2	Robert Wilmott, MD, MB, BS	Saint Louis University
Arjun Mahendran BS, MD	PL-2	Brian Pate, MD	University of Kansas - Wichita

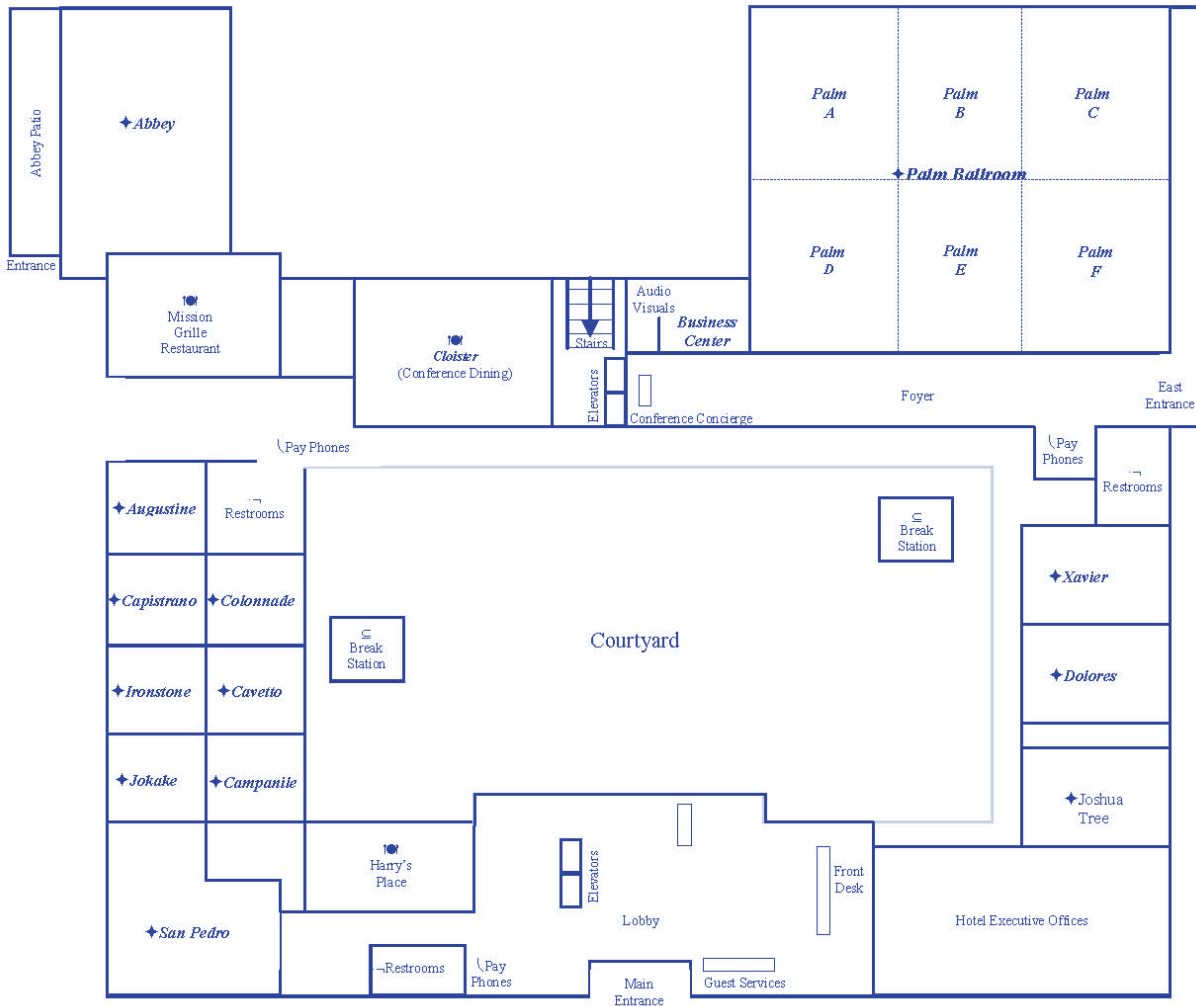
Resident	Year	Chair	Institution
Shawn A. Mahmud, MD, PhD	PL-1	Joseph Neglia, MD, MPH	University of Minnesota
Namyr Antonio Martinez, MD, PhD	PL-1	Stephen Teach, MD, MPH	Children's National Medical Center
Michael Miller, MD, PhD	PL-2	Steven Webber, MBChB, MRCP	Vanderbilt University
Clare O'Hare, MD	PL-2	Robert Lane, MD, MS	Medical College of Wisconsin
William Otto, MD	PL-2	Michael Artman, MD	Children's Mercy Hospital
Jonathan Pelletier, MD	PL-2	Ann Reed, MD	Duke University Hospital
Chetna Pande, MD, MPH	PL-2	Tina Cheng, MD, MPH	Johns Hopkins Hospital
Nikhil Raghuram PhD, MD	PL-1	Ronald Cohn, MD, FACMG	University of Toronto/Sick Kids
Sirish Rao, MD	PGY-3	Timothy Fete, MD, MPH	University of Missouri
Matthew Rysavy, MD, PhD	PL-2	Ellen Wald, MD	University of Wisconsin
Anthony Sabulski, MD	PL-2	Margaret Hostetter, MD	Cincinnati Children's Hospital Medical Center
Stephen Spurgin, MD	PL-1	Julio Perez Fontan, MD	University of Texas Southwestern Medical Center
Jane Symington, MD, PhD	PL-1	Donna Ferriero, MD, MS	University of California San Francisco
Patience Ugwi, MBBS, MPH	PL-2	Raphael Hirsch, MD	University of Iowa Stead Family Children's Hospital
Julia Weld, DO	PL-2	David Clark, MD	Albany Medical Center Lurie Children's Hospital
Kelly M. Werner, MD	PL-1	Charles Schleien, MD, MBA	Cohen Children's Medical Center of New York
Jessie Yester, MD, PhD	PL-2	Terence Dermody, MD	Children's Hospital of Pittsburgh
Yanjia Jason Zhang, MD, PhD	PL-2	Robert Vinci, MD	Boston Medical Center



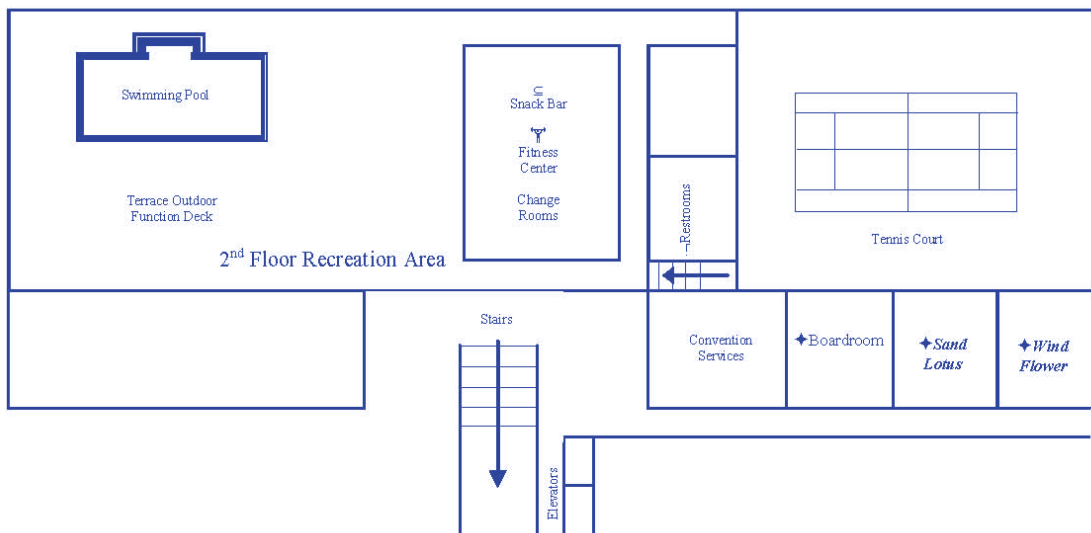


# Hotel Floor Plan

## 1<sup>st</sup> Floor



## 2<sup>nd</sup> Floor



# 2017 Annual Meeting

Association of Medical School  
Pediatric Department Chairs (AMSPDC)



**A M S P D C**

Tempe, AZ

[www.AMSPDC.org](http://www.AMSPDC.org)